

BT9700

Water Well Inspection Camera

See what you're missing.

Technically advanced camera ensures superior acquisition of images and evaluation of well conditions.

Using the BT9700 camera the operator can selectively target a downhole view or a Side View of the casing wall.

The camera's single-module design allows it to tilt off-center and zoom in both views. This unique operating benefit produces clear, quality images to more accurately evaluate difficult conditions.



BT9700 camera with LED ringlight



BT9700 camera with LED lighthead

PRODUCTIVE

- » Examine wall casing, infiltration, screens, gravel packs, encrustations, deterioration or blockages
- » LED lighthead for bright, clear downhole viewing
- » LED ringlight for locating tools and pumps, and other lost objects
- » Adaptable for use with some geophysical logging equipment

VERSATILE

- » Easy inspection of large diameter wells with high-intensity lights
- » Models for NTSC or PAL format
- » Adapts to most CCTV inspection systems
- » Auto Focus and Iris has manual override for clear viewing in difficult lighting conditions

DURABLE

- » Stainless steel construction with no external moving parts
- » On-screen camera diagnostics
- » Hermetically sealed and nitrogen-charged to eliminate humidity and condensation for clear viewing.

BT9700

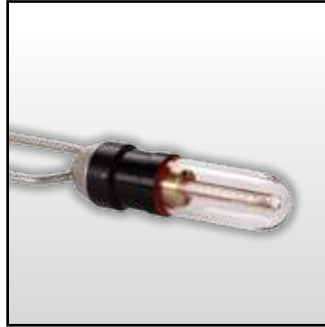
Water Well Inspection Camera

See what you're missing.

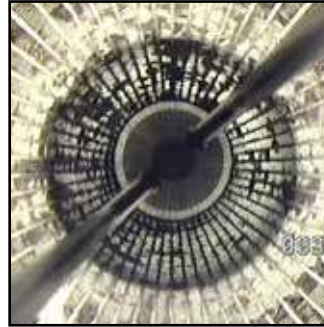
Pinpointing problems to reduce costly and unnecessary repairs.



Unique pan and tilt camera movement provides superior well casing examination



LED lighthouse, available in two lengths, for clear downhole viewing



Crystal clear images with 10X optical zoom and 530 TV lines horizontal resolution

Camera Operation:

- » Camera uses a single camera module for simple trouble-free dual view operation
- » 90° Side View with +20/-15 degree tilt
- » Down view radial tilt and zoom
- » 360° continuous rotation with three speeds
- » 3.5 inch (89 mm) camera diameter for inspecting boreholes of 4 inch (102 mm) minimum diameter, or larger
- » Depths to 5,000 feet (1524 m)

Controls and Features:

- » LED Side View light
- » Down view LED ringlight, or LED lighthouse available in two lengths: 18 inch and 24 inch (457 mm and 610 mm)
- » Auto Focus and Iris with manual override
- » Low-lighting "StarLite" setting
- » Selectable white balance modes: Automatic, incandescent, or LED lighting
- » On-screen color bar display

Specifications:

- » Length: 22 inches (560 mm); Weight: 20 lb (9 kg)
- » 10X optical zoom
- » 530 TV lines horizontal resolution
- » Minimum illumination of 1 lux @f1.8
- » Color analog video, NTSC or PAL
- » Maximum temperature rating of 167°F (75° C)

Note: Specifications and features subject to change.



ARIES
INDUSTRIES, INC.

Corporate Office

550 Elizabeth Street
Waukesha, WI 53186
Toll Free: 800-234-7205
Phone: 262-896-7205
Fax: 262-896-7099

Western Regional

5748 E. Shields Avenue, Suite 101
Fresno, CA 93727
Toll Free: 800-671-0383
Phone: 559-291-0383
Fax: 559-291-0463

Southern Regional

561 Thornton Road, Suite D
Lithia Springs, GA 30122
Toll Free: 800-327-4346
Phone: 770-941-1144
Fax: 770-941-1141

Aries Canada Ltd.

1081 Meyerside Drive, Units 1&2
Mississauga, Ontario
Canada L5T-1M4
Toll Free: 877-730-7010
Phone: 905-795-7913
Fax: 905-795-7905