



**WHAT'S NEW ?**

- The Aries Pathfinder trailer package is helping many Municipalities find their way through budget cut-backs
- Aries introduces several new products to help increase productivity and profits for the rehabilitation contractor
- Got Grout?

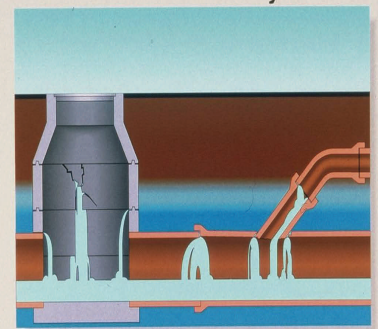
**INSIDE THIS ISSUE:**

<b>Infiltration &amp; Grouting</b>	<b>1</b>
<b>Vehicle News</b>	<b>1</b>
<b>Training Schools</b>	<b>1</b>
<b>L.E.T.S.</b>	<b>2</b>
<b>Seeker</b>	<b>2</b>
<b>Brutus</b>	<b>2</b>
<b>CoolVision</b>	<b>3</b>
<b>Pioneer Tractor</b>	<b>3</b>
<b>Mini Illuminator</b>	<b>3</b>
<b>Sonar Profiler</b>	<b>3</b>
<b>ThermaView II</b>	<b>4</b>
<b>Presidents Message</b>	<b>4</b>
<b>Software</b>	<b>4</b>
<b>FNF Cutter Head</b>	<b>4</b>
<b>Announcements</b>	<b>4</b>
<b>Marketing / Training</b>	<b>4</b>

**Hot Topic: Infiltration & Grouting**

Chemical grouting is the most proven yet misunderstood process of the sewer rehab methods whereby the grout, which has the viscosity of water, is pumped out of the sewer pipe joint, crack or connection into the surrounding soil. The grout saturates the soil displacing the water between the soil grains and then gels. This gelling locks up the soil grains stabilizing the soil and prevents water flowing thru the soil into sewer crack and thus into the sewer structure effectively stopping infiltration. The process is commonly used for both new and old pipes that have ground water infiltrating thru the joints. It is not a structural repair but grout very effectively stops infiltration. If this is a business you want to learn more about see us at the Aries Booth or call 800-234-7205. For more information about chemical grouting visit [www.ariesindustries.com](http://www.ariesindustries.com)

Chemical Grout Stops Infiltration. Permanently.



In Manholes • Joints • Cracks • Service Lines and Connections

**Aries Training Schools Continue Popular Tradition**

Here's what some of our students have to share about their experience in our schools...

"...fabulous instructor. He was able to accommodate a wide range of experience levels and allowed group discussion for further learning."  
-DT Michigan

"I am impressed with the knowledge of your staff, they have a better overall knowledge than any other company I have ever worked with."  
- BH Oklahoma

"Addressed many of the things I needed to know for the job and many of the issues I have experienced on the truck"  
DS Florida

In Aries training schools our classroom instruction is combined with actual product training models for valuable hands-on usage and repair experience.

Please visit Aries web site for a complete listing of times and locations of our service schools.

**- Aries Vehicles - Next Generation**

Aries Industries continues to innovate and react to customer needs with the introduction of a compact, "all purpose" truck outfitted with standard Aries inspection equipment. The Aries TV truck allows operators to work in areas where excessive noise or exhaust are discouraged. Additional benefits include fuel efficiency, compact design for easier parking and excellent handling on city streets. Aries will custom build a system to meet your inspection, storage and operation needs.

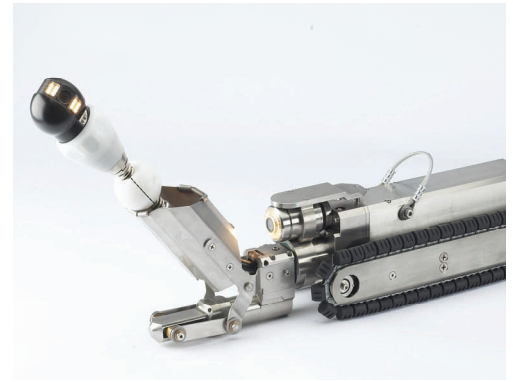
See our new Transit Connect at the Pumper Cleaner Show in Louisville at booth #1008



# L.E.T.S.

Our LETS system's low friction drive mechanism virtually eliminates cable wear, and the automated self-capturing push cable retrieval gets you out of tough situations easily, increasing reliability and product life.

Order your new LETS system with our new Mini Illuminator Pan & Tilt Camera and get full pan and tilt capabilities in the mainline as well as service lines from 3" and above at distances up to 150' from the sewer main.



## Seeker

The Seeker now offers two camera head options. Get the standard mini camera with a new high resolution module and improved high intensity LED lighting or the optional Mini Illuminator Pan & Tilt Camera that is fully Functional in 3" diameter pipes and larger.

Need to record your video? Now you can record the video on any standard USB storage device and transfer it to any computer in three video quality options.

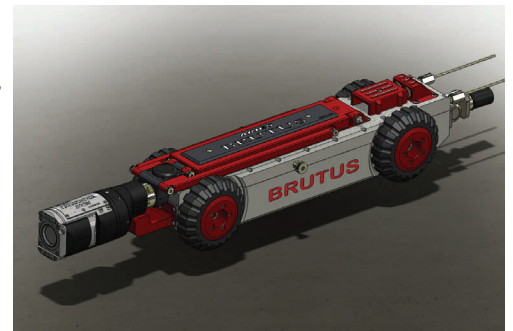
The optional wireless video transmission now allows you to record the video up to 300 feet away to any CCTV truck or mainline system.

The system now uses a universal power supply that works in either 110/120V AC 60 Hz or 220/240V AC 50Hz and NTSC or PAL video formats.

## Brutus Tractor

Designed to perform in roughest, most rugged conditions and tough enough to handle every inspection need, the Brutus crawler is the most powerful tool for inspecting pipes from 8" to 96" diameter. If conditions get too thick, the clutch automatically disengages when the power supply is cut enabling the retrieval with no damage to the unit. The Brutus can not only overcome any obstacle, it can travel over 2,000 feet from a single entry point.

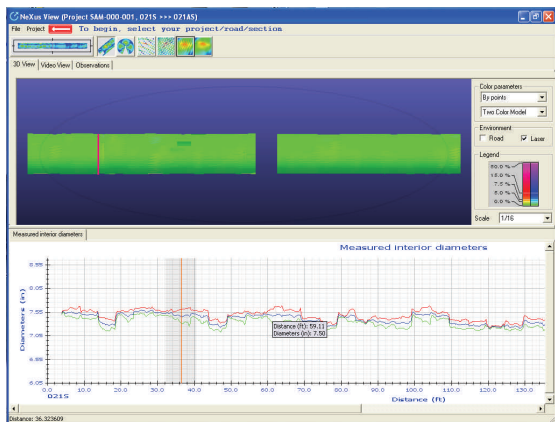
The Brutus is adaptable to any Aries multi-conductor system and can be used with any Aries Pan & Tilt Camera.



## CoolVision Laser Profiler

Aries CoolVision is the most accurate laser based profiling instrument for surveying, locating, measuring and reporting the profiles and pipe deformations found in storm drains, sewer mains and water pipes in the industry.

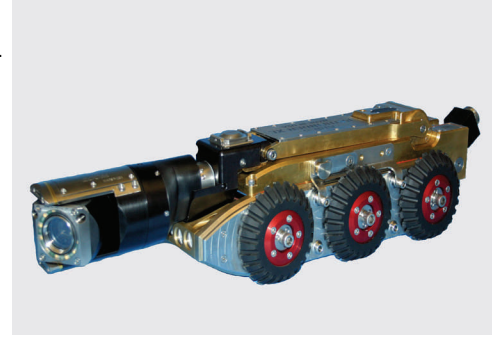
CoolVision© incorporates a fixed optical triangulation system using a dedicated CCD camera that completely eliminates orientation and dimensional problems of a snap-on laser systems used by other manufacturers. Our profiler is towed behind any ARIES sewer pan and tilt camera tractor system. The system is designed for use in pipe sizes from 8" through to 48" diameter pipe.



# Pioneer Tractor

Aries Pioneer tractor will handle all new Pathfinder cameras as well as the Saturn Mini Camera. The Pioneer is the only transporter with an automatic camera lift that will operate in a relined 8" diameter pipe. The Pioneer has standard features that truly set it apart from the rest. Our Pioneer tractor has:

- Standard electric remote camera lift
- Built in LED auxiliary lights
- On board 512 Hz locating beacon
- Built in tilt-and-rolé inclinometer
- Rear facing camera in rear cable connector to give you an unequaled 360 degree



## Mini-Illuminator Pan & Tilt Camera



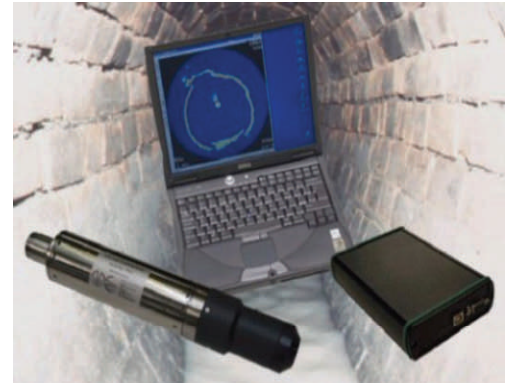
Aries Mini-Illuminator Pan & Tilt Camera is the newest in the line of Aries versatile Pan & tilt Cameras for the inspection of pipes of 4" diameter upwards. The camera head can quickly locate any desired viewing direction without any mechanical stops. The high intensity LED lighting system ensures optimal illumination in the pipe. The camera has a built-in 512Hz Sonde as a standard for locating camera position from above ground.

The Aries Ultra Mini Pan & Tilt Camera can be operated with all Aries tractors or the self contained Seeker Push Camera system and the new and improved LETS.

## Sonar Profiler

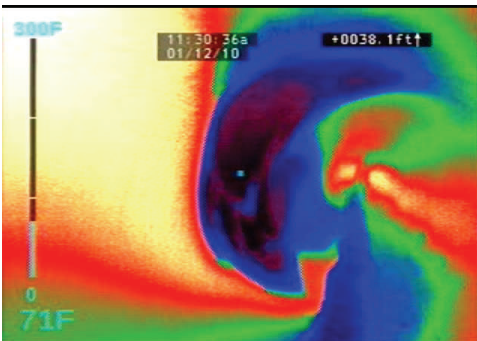
Aries Sonar Profiler is designed to inspect pipelines that are full of water and can not be drained for inspection. The Sonar system is either mounted on a float, tractor or skid system and gives a high resolution image of any debris, holes or service connections under the water.

Aries can adapt the Sonar to almost any existing Aries multi-conductor CCTV system or run it on our RedMaxx cable at distances up to 2,000' from a single entry point.



## ThermaView II Pan & Tilt Camera

Aries New ThermaView II Pan & Tilt Camera is now better than ever. With double the resolution and digital zoom capabilities on the thermal imaging side and a new high resolution camera module and high intensity LED lighting on the video side, the new ThermaView II is truly the camera that will allow you to see things all other cameras miss!



The new thermal imaging module allows the user to view any image in four (4) different perspectives, two full color modes and two black and white modes.

We have also added a new visual thermometer that allows the user to pinpoint the temperature of any image on the screen to within  $\pm 0.5^\circ$  accuracy.

Our new ThermaView II is perfect for identifying infiltration under water levels; locate service taps and tees in relined water or sewer mains or for finding "hot spots" in conduits.

## From the Office of the President

Aries Industries is celebrating our 25<sup>th</sup> year in business, enjoying our leadership position as a major manufacturer of pipeline inspection and robotics for the Sewer, Water, Natural Gas, Water Well, Oil and Geophysical markets. We are very proud of our ability to supply quality products to the world supported by a talented, caring group of Aries employees and a strong network of dedicated Distributors. The Aries quality and reliability commitments are critical as we design and build products to make your work easier and more productive, translating to maximizing footage per day, volume of lines grouted and number of laterals inspected.

The Aries booth in Louisville will feature a variety of display vehicles including two Grout Trucks, a high cube TV/Cutter Truck, a cost effective Trailer offering and our new Transit Connect inspection vehicle. Also on display are Aries new Pioneer Tractor, Sonar System and Laser Profiling System which we look forward to demonstrating and discussing.

Thank you for partnering with Aries Industries. We look forward to supporting your needs for 25 more exciting and gratifying years.

Jim Lenahan  
President & CEO

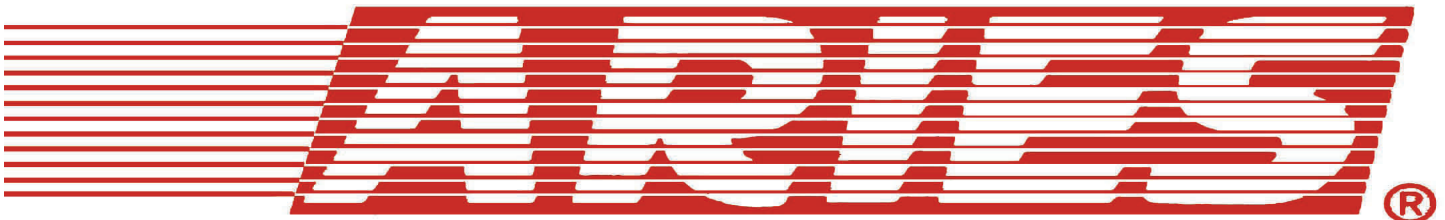
### Aries Software Asset Management programs are simple to use in the field or office

When combined with any of our CCTV systems, you can quickly organize your information into reports that aid in your decision making process. All of our inspection software integrates seamlessly with other applications such as CityWorks, Cartograph, Hansen and other management software. For GIS integration, we can work with ESRI's latest products to transfer and link information from the vehicle to the office.



### FNF Cutter/Grinding Head

Aries FNF Cutting and Grinding Head requires HALF the cutting time compared to other cutters in the industry in 10 to 24 inch pipe using HIGH TORQUE, low RPM 2 HP air motor and new half inch routers and large carbide grinders. This easily mounts to existing Raptor cutters or can be retrofitted to other manufacturers as well.



## Announcements

### WELCOME NEW DEALERS

- J & J Equipment (New York)
- Solid Waste Systems (Washington)
- SewerTech Equipment (Georgia, Alabama)

### ARIES PERSONNEL ADDITIONS

- Scott Rose (Canada Sales)
- Adam Holdt (US Sales)

**Visit our Pumper & Cleaner show**

**Booth #1008 to see the next generation of Aries Trucks**

**Or visit our website:**

**[www.ariesindustries.com](http://www.ariesindustries.com)**

## Marketing and Training News

### Grout Boot Camp

- Grout Boot Camp #8 January, 26-28, 2010 April 2010
- Grout Boot Camp #9 April, 14-16, 2010 October 2010

### Tractor Schools

### Aries Industries Locations

#### Corporate Office

550 Elizabeth Street  
Waukesha, WI 53186  
TOLL FREE: 800-234-7205  
FAX: 262-896-7099

#### Southeastern Regional

1441 SW 10th Avenue, #202  
Pompano Beach, FL 33069  
TOLL FREE: 800-327-4346  
PHONE: 954-785-5540

#### Western Regional

5748 East Shields Avenue  
Fresno, CA 93727  
TOLL FREE: 888-285-0366  
FAX: 559-291-0463

#### Aries Canada LTD.

1081 Meyerside Drive, Units 1&2  
Mississauga, Ontario; Canada L5T-1M4  
TOLL FREE: 877-730-7010  
PHONE: 905-795-7913